

# The Container Docking Station **LHL**



Setting up of the container by pallet truck

Integrated device for easy flowing

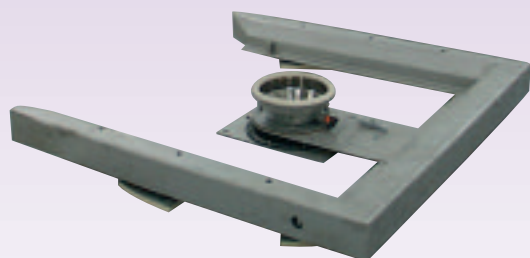
No separation, no packing

Automatic functioning

Self adaptation to the product

Patented system

To be used only for gravity transfer

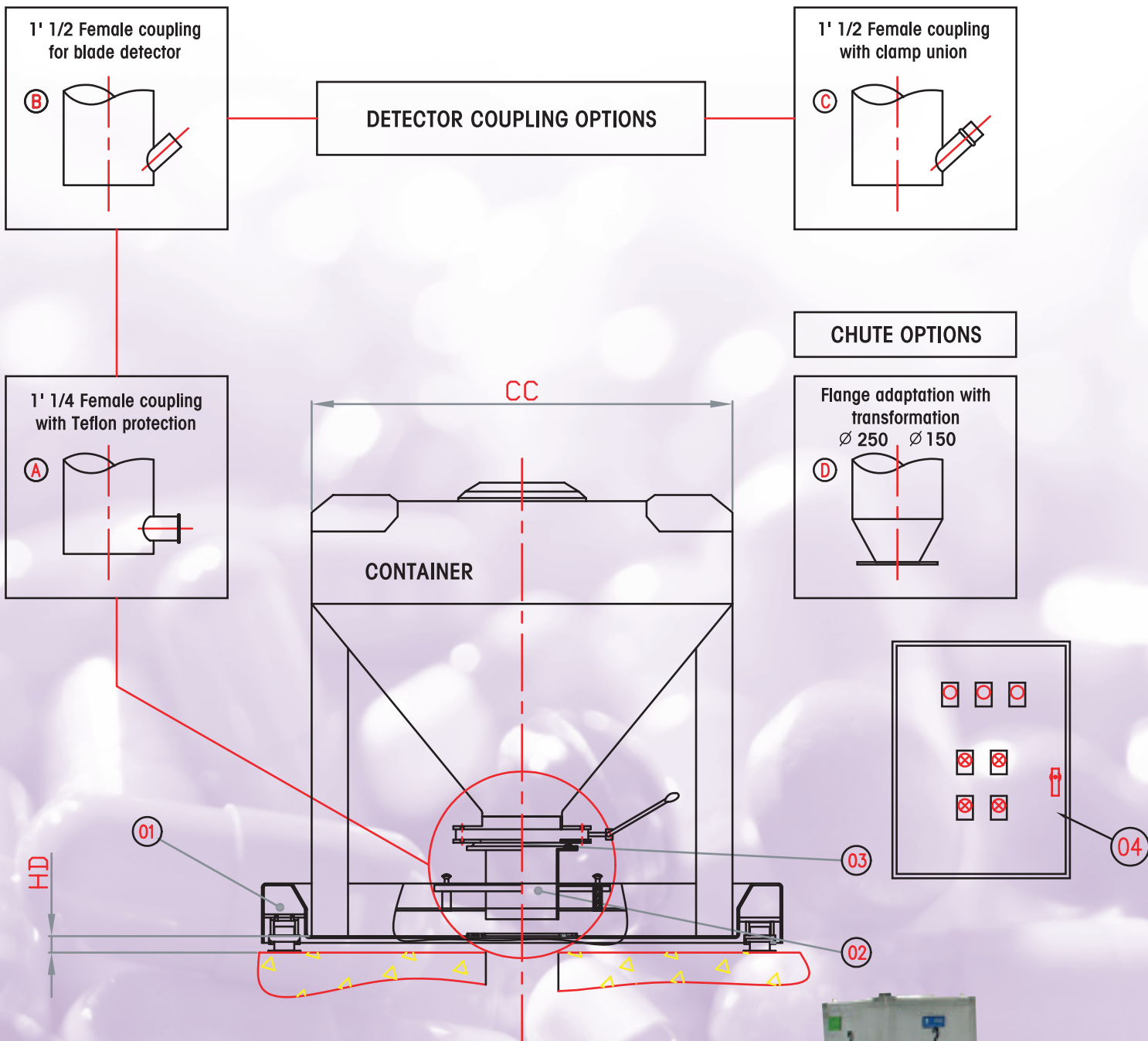


*Tight connection*

**TECHNI**lab<sup>®</sup>



# The Container Docking Station **LHL**



Rep.	Qty	Designation	Material
01	1	Frame	304 L Stainless Steel
02	1	DN 250 chute	304 L or 316 L Stainless Steel
03	1	Tight ring	Nitril
04	1	PLC control panel	Carbon Steel Epoxy Coated

## Options

Rep.	Qty	Designation
A	1	INDUCTIVE DETECTOR (1' 1/4 Teflon protection)
B	1	BLADE DETECTOR (1' 1/2 Femal coupling)
C	1	BLADE DETECTOR (Femal coupling + clamp union)
D	1	TRANSFORMATION Ø 150
E	1	STAINLESS STEEL CONTROL PANEL

## PARAMETERS

TH : Total Height = 51 mm  
 CC : Standard Container Dimension : L = 1325 ; l = 1125 mm  
 Total mass : 90 kg



**TECHNIlab**<sup>®</sup>

30 bis, rue du Bois Chaland - CE 2948 • 91029 EVRY Cedex FRANCE

Tél. : +33 (0)1 60 86 96 48 • Fax : +33 (0)1 60 86 90 01

[www.technilab.fr](http://www.technilab.fr)